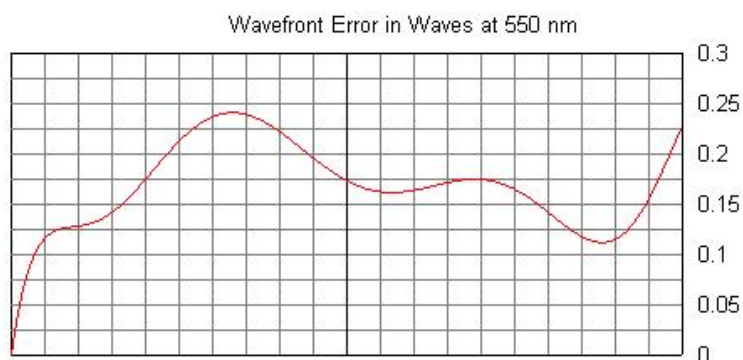
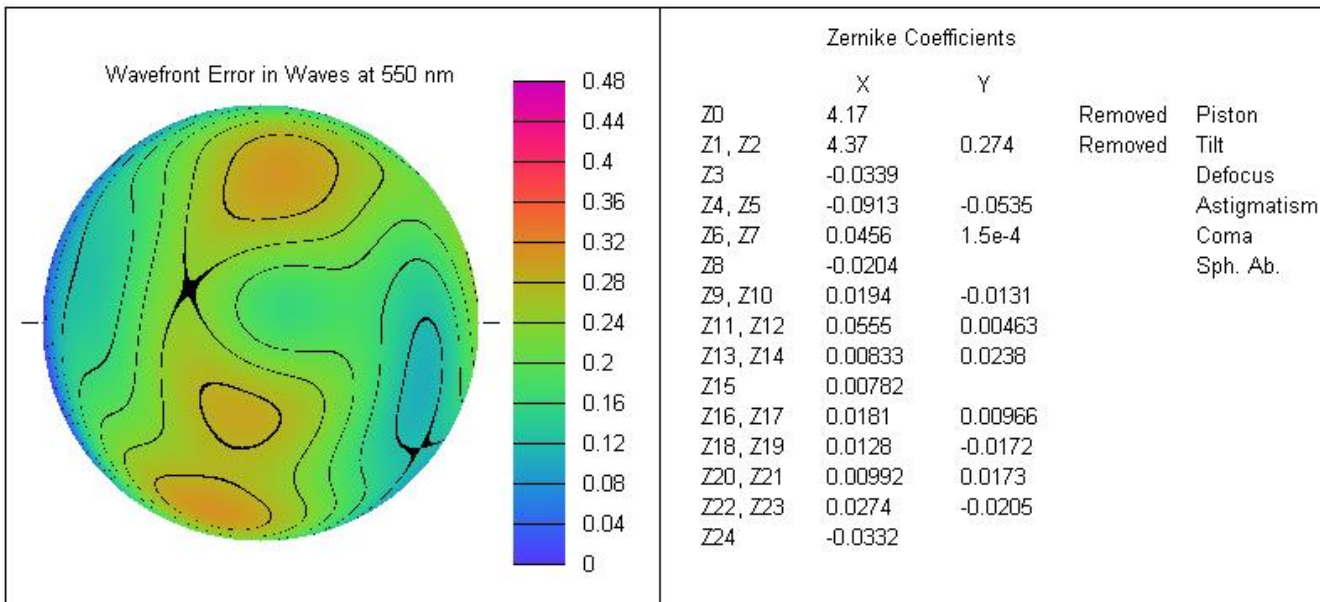


### FringeXP Test Report

Mirror Description: 6in Flats - unit "B"  
 Test Bench results indicate 1/4 wave  
 Tested by: F.Glick  
 Date: 12-21-2006

At 550 nm:          RMS Wavefront Error = 1/17.3 waves          RMS Surface Error = 15.89 nm  
                                 Strehl Ratio = 0.877                       P-V Wavefront Error = 1/3.216 waves



**Other Data**

Interferogram Wavelength = 550 nm  
 Target Conic Constant = 0  
 Total Fringe Points = 115  
 RMS Zernike Fit Error = 0.0253 waves

Mirror Diameter = 152.4 mm  
 Best Fit Conic Constant = -2.823e13  
 Number of Fringes = 12

Mirror RoC = 1.524e8 mm  
 Fringe Spacing = 0.5 waves